



ABACO MACHINES

OPERATION MANUAL

ABACO SLAB BUGGY
(SBG800-AU)



ABACO MACHINES (AUS)

Unit 4/34-36 Fairfield St., Fairfield East N.S.W 2165 Australia

Tel : 61-2-9632-4990

Email : Sales@abaco.com.au

Website : www.abaco.com.au

APPLICABLE MODEL
of this SLAB BUGGY
SBG800-AU

INDEX

Item	Pages
I Equipment General Information.....	1
II Technical Specifications	1
1. Dimensions	1
2. Spare Part List	2
III Safety Instructions.....	5
1. General Warnings, Cautions and Notes	5
2. Device usage	6
IV Technical Problems & Solutions	8
V Inspection & Maintenance	8
VI Warranty Policy	9
Warranty Certificate	10

General Safety Operation Manual Instructions Summary:

It is essential to review carefully and understand this Operation Manual before operating the equipment. Failing to read and understand this entire manual may cause injury or death to personnel, or damage to the equipment and the products that are being handled by this equipment if not properly followed.

This safety summary includes general safety precautions and instructions that must be understood and applied before, during, and after operations, as well as maintenance to ensure personnel safety and protection of this equipment. Prior to performing any task, the contents included in this manual should be reviewed and fully understood.

This manual explains some essential operating or maintenance procedures, practices, conditions, statements, etc. that if those are not strictly followed, it could result in injury, or death by chance in the worst case. And there might be some chances of damaging or destructing materials or machine component itself. In order to avoid or eradicate such worst coincidences and happenings, it is essential to read through this manual and follow accordingly. It is also important to comprehend the functions of this equipment thoroughly for your safe and efficient operations.

For any question, please contact your local dealer or distributor.

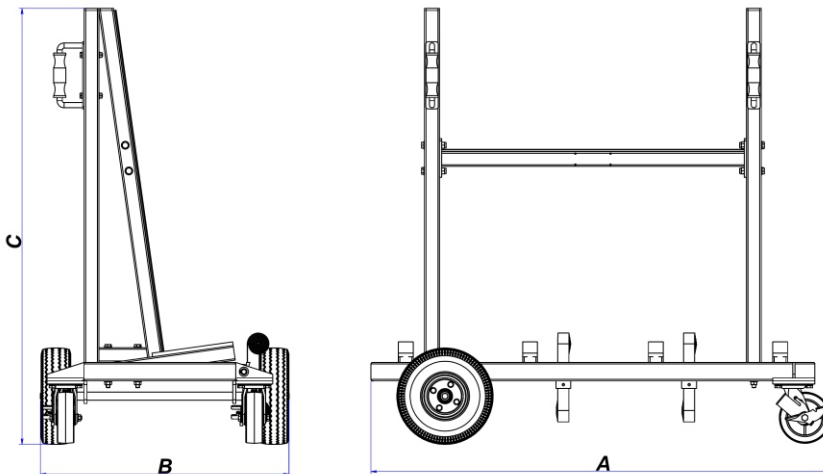
I. EQUIPMENT GENERAL INFORMATION:

- Slab Buggy is designed for transporting and storing stone slabs in job sites, warehouses, factories or construction sites.
- Brakes on casters prevent the cart from moving.
- The surface of the A-frame has special rubber strips to prevent the stone slabs from not only from slipping but also scratching and damaging.
- Composition by separated parts and components, are convenient for disassembly for transportation and re-assembly.

II. TECHNICAL SPECIFICATIONS:

- Slab Buggy is made of steel so it is sturdy and durable.
- The structure of two A-Frames is balanced and parallel at both sides, so that it provides efficient and reliable functions to enhance the safety during transporting.

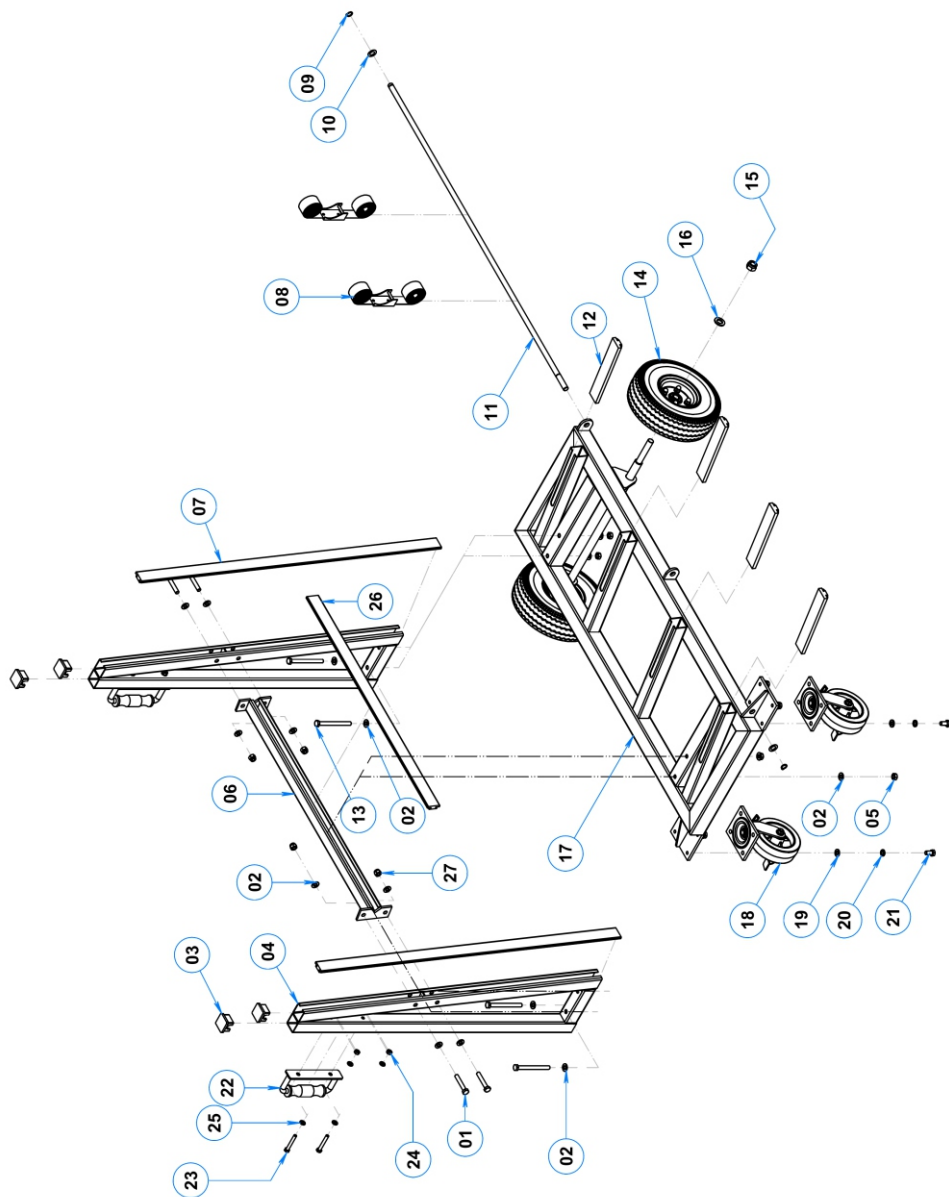
1. Dimensions:



Length (A) inches (mm)	Width (B) inches (mm)	Height (C) inches (mm)	W.L.L* lbs (kg)
48 $\frac{13}{16}$ (1240)	26 $\frac{11}{16}$ (678)	47 $\frac{3}{16}$ (1199)	1100 (500)

**WLL: Work load limit*

2. Spare part list:



DESCRIPTION	QTY.	PART NUMBER
Bolt M10 x 60	4	SBG800-AU-01
Washer ø10	16	SBG800-AU-02
Rubber cap	4	SBG800-AU-03
A-frame	2	SBG800-AU-04
Nut M10	4	SBG800-AU-05
Cross bar	1	SBG800-AU-06
Rubber strip 1	2	SBG800-AU-07
Ratchet strap	2	SBG800-AU-08
Circlip ø14	2	SBG800-AU-09
Aluminum washer ø14	2	SBG800-AU-10
Shaft	1	SBG800-AU-11
Rubber strip 2	4	SBG800-AU-12
Bolt M10 x 110	4	SBG800-AU-13
Wheel	2	SBG800-AU-14
Lock nut M16	2	SBG800-AU-15
Washer ø16	2	SBG800-AU-16
Base	1	SBG800-AU-17
Swivel caster	2	SBG800-AU-18
Washer ø10	8	SBG800-AU-19

DESCRIPTION	QTY.	PART NUMBER
Spring washer ø10	8	SBG800-AU-20
Bolt M10 x 20	8	SBG800-AU-21
Grip handle	2	SBG800-AU-22
Bolt M8 x 60	4	SBG800-AU-23
Nut M8	4	SBG800-AU-24
Washer ø8	8	SBG800-AU-25
Rubber strip 3	1	SBG800-AU-26
Lock nut M10	4	SBG800-AU-27

III. SAFETY INSTRUCTION:

1. General Cautions for Operations:

a. Before operations:

- Make sure that the Slab Buggy is in good operating conditions.
- Confirm all the welded joints are free from any defect or damage, such as separation, crack, and so forth.
- Make sure that the rubber surface and stone surface are free from dirt, grease and other substances.
- Make sure that all the bolts and nuts are securely tightened.
- Make sure that two swivel casters are locked before placing stone slabs.
- Use appropriate PPE (Personal Protective Equipment) to protect against injury.
- Lubricate the casters.

b. During operations:

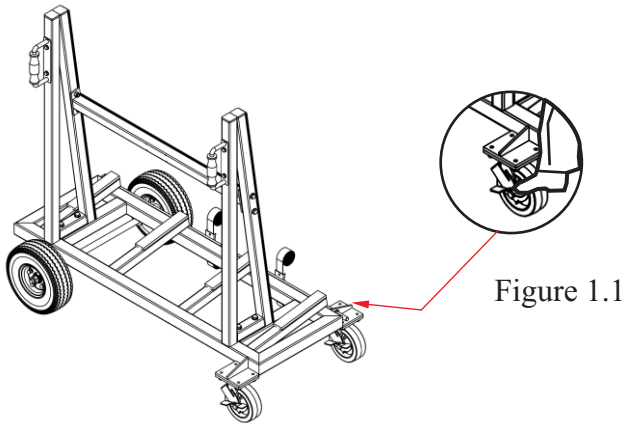
- Make sure the weight of the slabs being placed is within the specified WLL (refer to the table at page 2).
- Slabs must be firmly restrained during transportation.
- Check the wheels regularly to work smoothly during operations.
- Follow the steps and instructions in the Operation Manual.
- For your own safety, follow all the applicable laws and regulations in your area

c. After operations:

- Clean the Slab Buggy thoroughly after each use.
- Lubricate the wheels.
- Protect the rubber strips.
- Store the device in a well-ventilated place; avoid places with high heat or humidity.

2. Device usage:

Step 1: Lock 2 swivel casters (Figure 1.1) not to make the A-frame move while loading stone slabs.



Step 2: Place the stone slabs on the Slab Buggy (Figure 2.1).

Note:

- The total weight of the slabs being placed is within the specified WLL
- The slabs must lean against the A-frame and make sure there is no gap between the stone slab and the A-frame (Figure 2.2).
- The operator must confirm the height of the slab shall not be more than 300mm from the top of the A-frame (Figure 2.2).

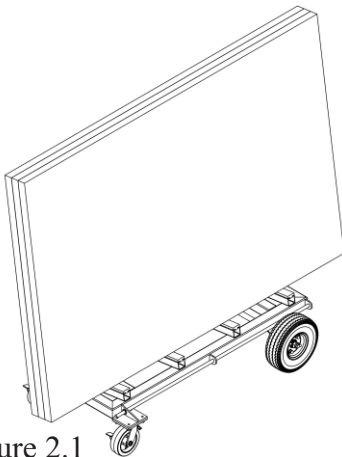


Figure 2.1

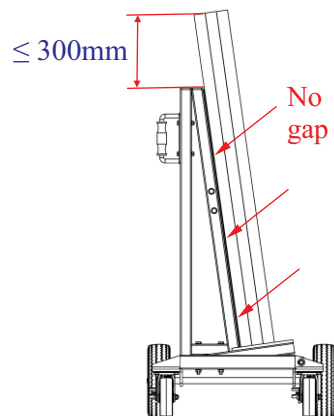


Figure 2.2

Step 3: Fix the slabs on the Slab Buggy.

Use Straps to fix the slabs on the Slab Buggy (figure 3.1).

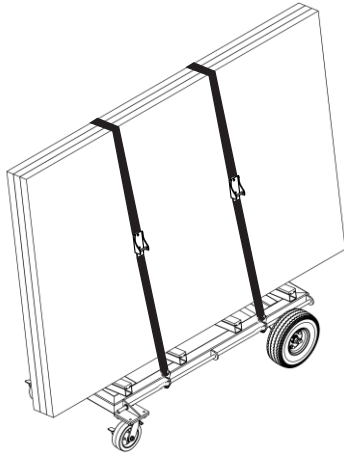


Figure 3.1

Step 4: Move the Slabs Buggy to the desirable place.

Unlock the swivel casters and move the Slabs Buggy to desirable place (figure 4.1).

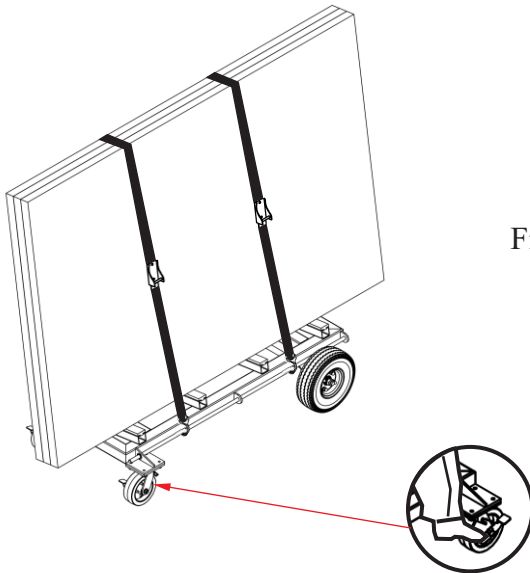


Figure 4.1

IV. TECHNICAL PROBLEMS & SOLUTIONS:

Technical problems	Causes	Solutions
The swivel casters cannot move	Rust and/or dust, bearings is damaged.	Clean, lubricate or replace with a new one.
Rubber strip is damaged	Worn out, or cracked	Replace with a new one.

V. INSPECTION & MAINTENANCE:

- Schedule periodic maintenance checking for overall and for welded part, no cracking, or any defect.
- Check and tighten the nuts and bolts on regular basis.
- Always keep the Slab Buggy clean, dry and away from grease or other substances as they may cling on to the device and prevent it from operating properly.
- Always keep necessary spare parts on hand for maintenance and repair.
- Store in a well – ventilated places without high heat and humidity.

VI. WARRANTY POLICY:

At the time of delivery, it is necessary to inspect the **SLAB BUGGY (SBG800-AU)** to make sure that it has not been damaged during shipment. The product at the time of dispatch is warranted to be free from defects in material or workmanship.

Claims for errors, shortages, defects, or nonconformities ascertainable upon inspection must be made in writing within eight business days from the date of product delivery. Claims not made as provided above and within the applicable time period will be barred. And no other claims will be considered.

We provide a one (1) year warranty on the **SLAB BUGGY (SBG800-AU)** from the date of purchase.

During warranty period, we will provide the replacement parts at no charge (*Please note:* shipping and handling fees may apply).

Warranty coverage is void if:

- The operator failed to comply with the instructions in the manual.
- The specifications were not followed.
- Damage was due to inadequate maintenance and inspections.
- Damage was due to improper storage and/or usage.
- Modification and repairs made to the equipment were performed by the user/operator without the manufacture's knowledge and agreement.
- Aftermarket or none genuine spare parts were used for repair installation.
- Modification and repair installations were conducted by uncertified individual.

WARRANTY CERTIFICATE

You are kindly requested to read the following carefully.

PERIOD

The warranty starts from the date of purchase (date on distributor's invoice).

Warranty is valid for a period of twelve (12) months.

WARRANTY

This warranty is limited only to provide replacements of the parts recognized by the Company as defective (excluding worn-outs and consumables.)

The Company is not responsible for any misuse or abuse of the product after purchase and/or caused by negligence from the content of this manual.

In case of failure using the device, our Customer Support Department will inform you of the appropriate methods of dealing with your claim and advise you of your nearest approved service center.

EXCLUSIONS

Warranty does not apply for damages or failures caused by:

Incorrect use by users for error in transportation, in handling or in maintenance.

Use of non-genuine parts/accessories, or of incorrect specifications.

THIS MANUAL SHALL BE REVISED WITHOUT PRIOR NOTICE
FOR IMPROVEMENT PURPOSES
DO NOT COPY AND/OR QUOTE THE CONTENTS WITHOUT
PRIOR WRITTEN CONSENTS.

All Rights Reserved:
C23

