

TEK17 series

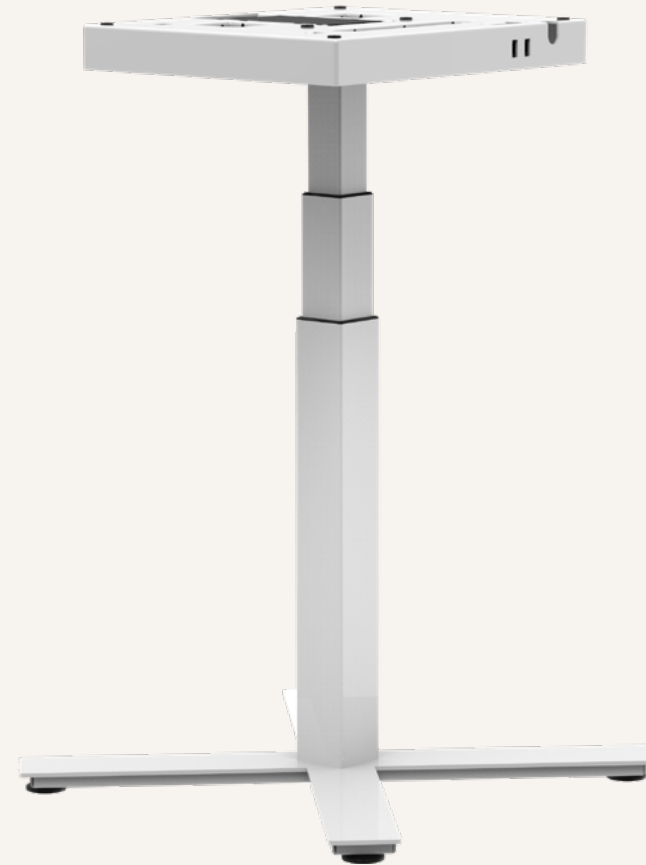
Single Column Desk Frame

General Features

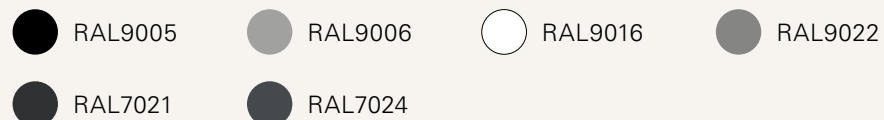
Max. load	Up to 70kg*
Constant speed	3-stage column: Up to 40mm/s 2-stage column: Up to 31mm/s
Weight of package	27kg*
Standby power	< 0.1W
Accessories (optional)	USB Chargers, TFA1/3 Anti-Collision Sensor, TCS1 Wireless Chargers, TWC

Multiple column and control options
High strength and stability - Steel construction

*It varies upon the selection of components.



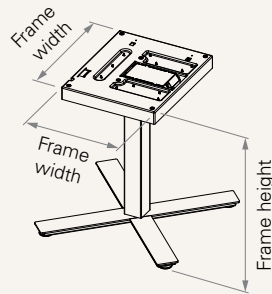
Color (RAL Classic)



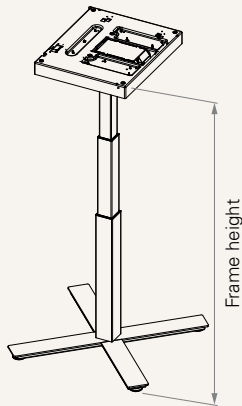
*For more color options, please consult your sales representative.



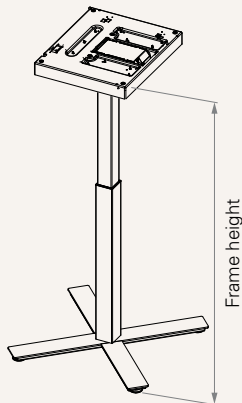
Dimension



• 3-Stage



• 2-Stage



Frame & Work Surface

Frame dimensions (mm)	Recommended work surface dimensions (mm)	
Length*Width (mm)	Length (mm)	Width (mm)
450*380	500~800	450~600

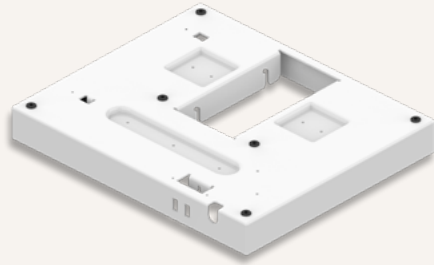
Hight Range

Column type	Frame height (mm)	Stroke (mm)
3-Stage	630~1280	650
3-Stage (M)	600~1260	660
3-Stage (S)	560~1220	660
2-Stage	680~1180	500

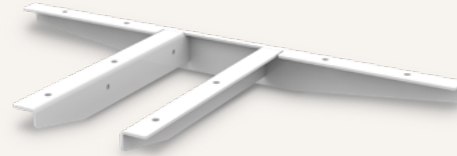
Top Plate



Style A

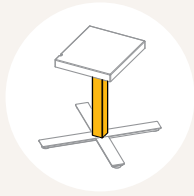


Style B



TL Model

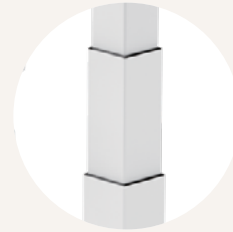
• 3-Stage



TL4
Square
70 x 70 mm



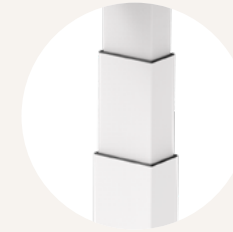
TL10
Rectangular
80 x 60 mm



TL4S
Square
70 x 70 mm



TL31S
Rectangular
90 x 60 mm



TL33S
Rectangular
83 x 53 mm

• 2-Stage



TL13
Square
70 x 70 mm



TL15
Rectangular
80 x 60 mm



TL13S
Square
70 x 70 mm



TL30S
Rectangular
90 x 60 mm



TL32S
Rectangular
83 x 53 mm

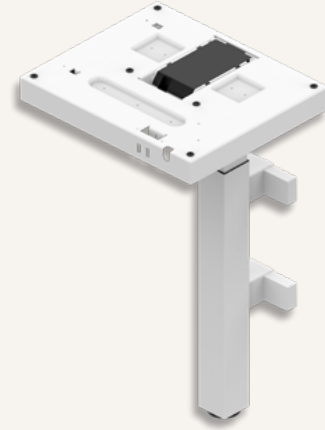
Desk Type



Freestanding



Wall-attached



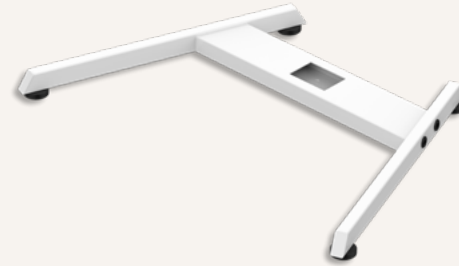
Foot



Style A



Style B



Hand Control



1 = TH37



2 = TFH8



3 = TDH1



4 = TDH2



5 = TDH3



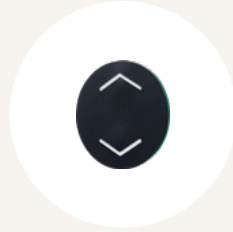
6 = TDH4



7 = TDH5



8 = TDH6



9 = TFH13



B = TH14



C = TFH21



D = TDH8P



E = TDH8



F = TDH8D



G = TDH11P



H = TDH12P



K = TDH16



L = TDH6PR



M = TDH5PR



N = TDH13P



P = TDH15



Q = TDH18P



R = TDH17



S = TDH20P

Hand Control



T = TDH9P



U = TDH27P

Accessories (optional)



TCS1

TCS1 is a collision sensor based on t-touch technology which does not require any additional hardware upgrades.



TFA1

A charger with 2 USB ports. Can be mounted on the table top.



TFA3

A charger with 2 USB ports. Can be mounted to the desk front side.



TWC

Designed for wireless charging of mobile devices. Can be mounted on the table top.

TEK17 Ordering Key

TEK17

Version: 20210830-G

TL Model See page 4	0004 = TL4 0010 = TL10	0013 = TL13 0015 = TL15	004S = TL4S 013S = TL13S	030S = TL30S 031S = TL31S	032S = TL32S 033S = TL33S
Foot (mm) See page 5	0 = Without 1 = Style A, thickness: 5, F1 & F2: 750, Standard			2 = Style B, only compatible with TL30S and TL31S	
Color	1 = Black (RAL 9005) 2 = Grey (RAL 9006)		3 = White (RAL 9016) 4 = Special grey (RAL 9022)		6 = Matte Black (RAL7021) 7 = Graphite grey (RAL7024)
TC Model	0 = Without	1 = TC11	2 = TC11P		
Hand Control	See page 6-7				
Top Plate (mm) See page 3	1 = Style A, thickness 3		2 = Style B		
Desk Type See page 5	0 = Freestanding	1 = Wall-attached			
Charger Model	0 = Without	1 = TFA3			
Assembly Manual	0 = Without C = Chinese, TiMOTION logo, Black / White printing E = English, TiMOTION logo, Black / White printing 1 = Chinese, TiMOTION logo, colour printing 2 = English, TiMOTION logo, colour printing		3 = Chinese, No logo, Black / White printing 4 = English, No logo, Black / White printing 5 = Chinese, No logo, colour printing 6 = English, No logo, colour printing		

Terms of Use

The user is responsible for determining the suitability of TiMOTION products for a specific application. TiMOTION products are subject to change without prior notice.