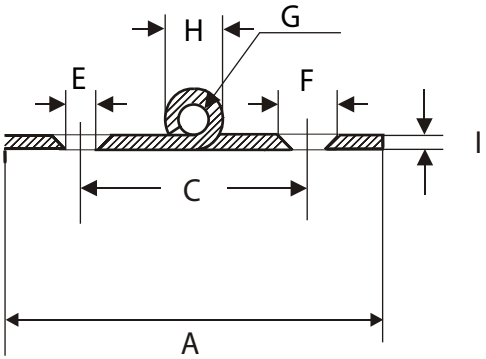
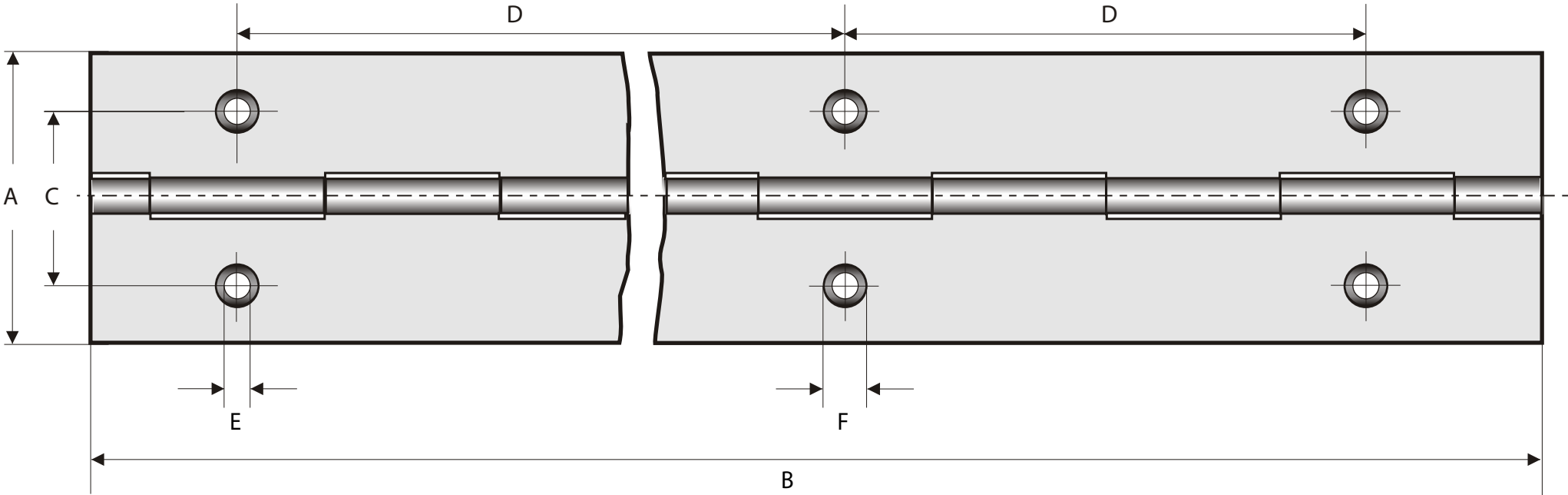


Continuous piano hinge



- A = Open width
- B = Length
- C = Hole spacing- width
- D = Hole spacing - length
- E = Hole \varnothing
- F = Countersunk
- G = Pin \varnothing
- H = Tube \varnothing
- I = Material thickness

Code	A	B	C	D	E	F	G	H	I
1-368-788	32	2400	17.5	60	4.25	5.5	1.75	3.4	0.7
1-368-790	32	2400	17.5	60	4.25	5.5	1.75	3.4	0.7
1-368-792	32	2400	17.5	60	4.25	5.5	1.75	3.4	0.7
1-368-794	32	2400	17.5	60.4	4.25	5.5	1.75	3.4	0.7
1-368-795	32	2400	17.5	60.4	4.25	5.5	1.75	3.4	0.7
1-368-796	32	25000	17.5	60.4	4.25	5.5	1.75	3.4	0.7
1-368-798	32	25000	17.5	60.4	4.25	5.5	1.75	3.4	0.7
1-368-800	32	25000	17.5	60.4	4.25	5.5	1.75	3.4	0.7
1-368-802	32	25000	17.5	60.4	4.25	5.5	1.75	3.4	0.7